

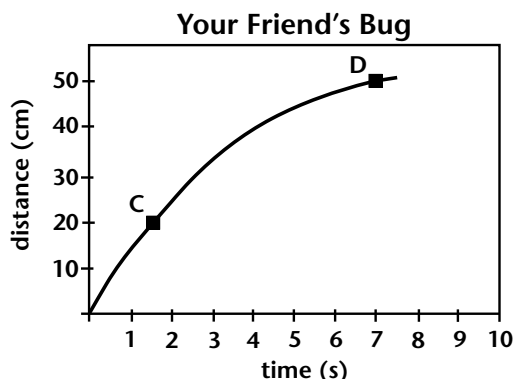
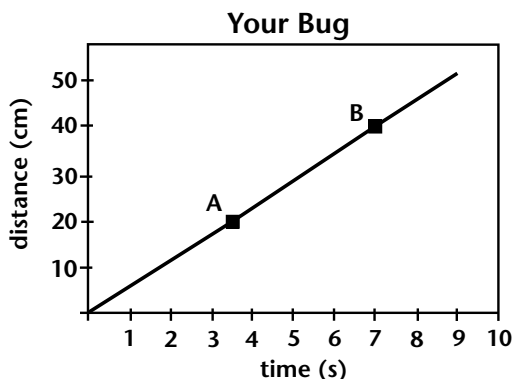
CHAPTER

5 REINFORCEMENT WORKSHEET

Bug Race

Complete this worksheet after you finish reading Chapter 5, Section 1.

You and a friend are having a bug race. You measure the distance your pet bugs travel along a straight race track and record their time as they race. The results are plotted in the graphs below. Take a look at the two graphs. Then answer the questions that follow.



1. Look at Point A. What distance has your bug traveled so far? _____
2. How long did it take your bug to travel that distance? _____
3. To determine your bug's average speed while traveling from the starting line to Point A, divide the distance traveled by the time it took to travel that distance:

$$\text{average speed} = \frac{\text{distance traveled}}{\text{elapsed time}} = \underline{\hspace{2cm}}$$
4. Now look at Point B. What is the distance from Point A to Point B? _____
5. How long did it take your bug to travel from Point A to Point B? _____
6. Calculate your bug's average speed from Point A to Point B.

7. Compare the graphs of your bug and your friend's bug. Which bug was traveling at a constant speed? Explain.

Copyright © by Holt, Rinehart and Winston. All rights reserved.